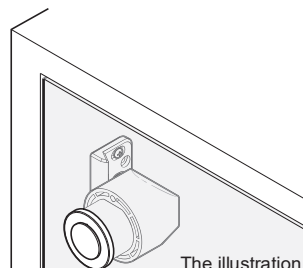


# Push Knob PK04, Push Knob Latch PKL05 Installation Manual

Thank you for selecting our product. Before starting installation, please read this manual thoroughly to ensure correct installation.  
Please keep this manual at hand for future reference.



The illustration shows PKL05.

## ABOUT THE PRODUCT

● A knob (PK04) or latch (PKL05) that becomes flush with its surroundings when the knob is pushed in.

### PK04 only

● 15-35 mm thickness without cap, 29-39 mm thickness with cap (sold separately).

### PKL05 only

● 15-30 mm thickness without spacer, to 13 mm thickness with spacer (sold separately).

● Pushing the knob in while the door is closed will lock it. Pushing the knob again will unlock it.

● Available in both right hanging and left hanging types, and both overlay and inset doors.

## DOOR SPECIFICATION

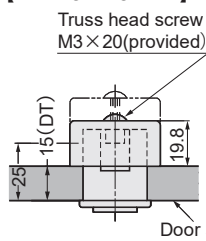
	Door thickness		
	Single bore	Dual bores	with optional parts
<b>PK04</b>	15-35	26-35	29-39
<b>PKL05</b>	15-30	—	13

## DIMENSIONS

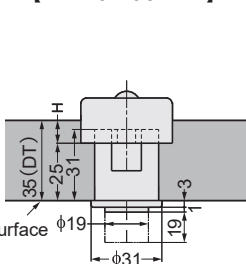
DT=Door thickness

### PK04

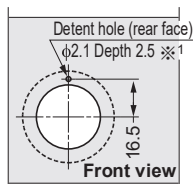
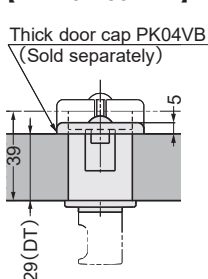
(DT:15-25 mm)



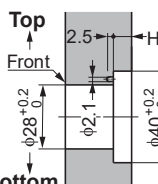
(DT:26-35 mm)



(DT:29-39 mm)



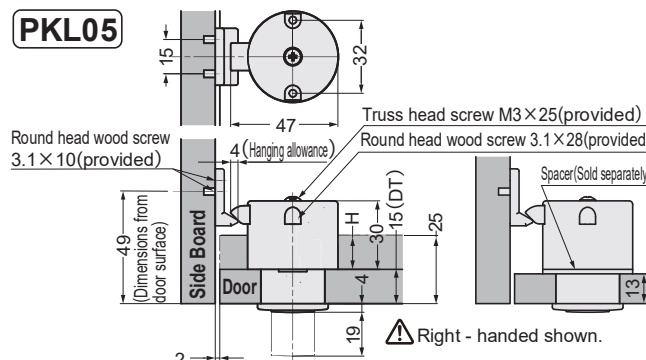
※1 Applicable to door thickness 15-35



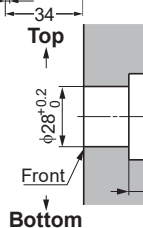
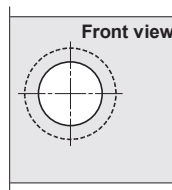
Door thickness(DT)	Bore depth(H)
15-25	—
26-35	DT-25 (Back of the door)
29-39※2	—

※2 When using cap (PK04VB)

### PKL05



△ Right-handed shown.

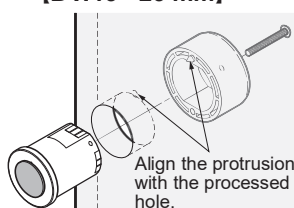


Door thickness	Bore depth(H)
13	— (with spacer)
15-25	DT-15 (Back of the door)

## INSTALLATION

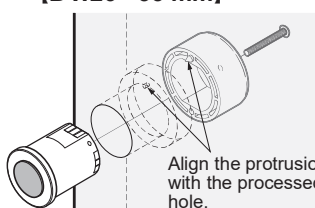
### PK04

(DT:15-25 mm)



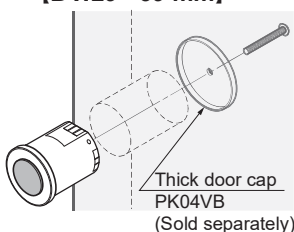
Align the protrusion with the processed hole.

(DT:26-35 mm)



Align the protrusion with the processed hole.

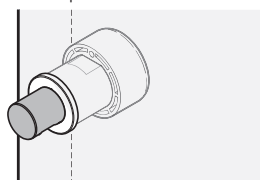
(DT:29-39 mm)



Thick door cap PK04VB (Sold separately)

### OPERATION CHECK

● Push the part and the knob comes out

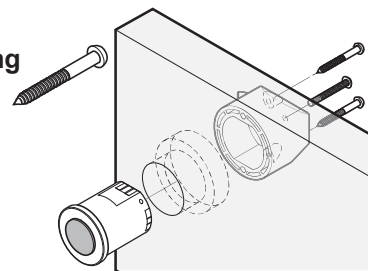


### PKL05

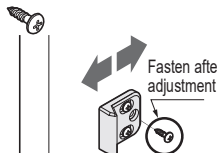
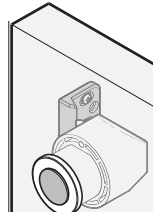
1 Mounting the counter plate



2 Mounting parts



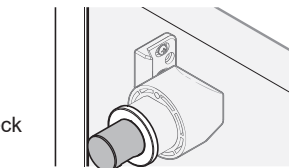
3 Adjusting counter plate



Close the door and check the latching action and adjust if needed.

### OPERATION CHECK

● When you push the part, the knob comes out and the latch is released.



△ Be sure to push the knob at closed position. Latch may be damaged if you close the door after pushing the knob.

SUGATSUNE KOGYO CO., LTD.  
Tokyo, JAPAN  
Phone: +81 3 3866 2260  
E-mail: export@sugatsune.co.jp

SUGATSUNE KOGYO (UK) LIMITED  
Reading, UK  
Phone: +44 1189 272 955  
E-mail: sales@sugatsune.co.uk

SUGATSUNE EUROPE GmbH  
Düsseldorf, GERMANY  
Phone: +49 211 53812 900  
E-mail: sales@sugatsune.eu

SUGATSUNE AMERICA, INC.  
California, USA  
Phone: +1 310 329 6373  
E-mail: sales@sugatsune.com

Chicago, USA  
Phone: +1 630 317 7072  
E-mail: sales@sugatsune.com

SUGATSUNE CANADA, INC.  
Montreal, CANADA  
Phone: +1 514 312 5267  
E-mail: support@sugatsune.ca

SUGATSUNE SHANGHAI CO., LTD.  
Shanghai, CHINA  
Phone: +86 21 3632 1858  
E-mail: lamp@sugatsune.com.cn

Guangzhou, CHINA  
Phone: +86 20 6639 3554  
E-mail: lamp@sugatsune.com.cn

SUGATSUNE KOREA CO., LTD.  
Incheon, KOREA  
Phone: +82 32 220 0603  
E-mail: sales@sugatsune-korea.co.kr

SUGATSUNE KOGYO INDIA PRIVATE LIMITED  
Mumbai, INDIA  
Phone: +91 9867299597  
E-mail: sales@sugatsune.in  
Delhi, INDIA  
Phone: +91 9867299597  
+91 11 45093636  
E-mail: sales@sugatsune.in